



WOMEN HOODIE SWEATSHIRTS
STELLA TRIGGER

STSW148

The iconic women's hoodie sweatshirt

Terry Sweatshirt

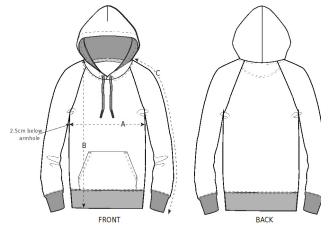
85% Organic ring-spun combed cotton, 15% Recycled polyester
 350 GSM

- Raglan sleeve
- Double layered hood in self fabric
- Round drawcords in matching body colour with metal tipping
- Stitched buttonhole eyelets
- Inside herringbone back neck tape
- Self fabric half moon at back neck
- Single needle topstitch at neckline
- 1x1 rib at sleeve hem and bottom hem with twin needle topstitch
- Kangaroo pocket with wide double topstitch

MEDIUM FIT

XS	S	M	L	XL	XXL*
----	---	---	---	----	------

Size guide



SIZES		XS	S	M	L	XL	XXL
A	Half Chest	50.5	53	56	59	62	65
B	Body Length	59	61	63	65	66	67
C	Sleeve Length	69.8	71	72.5	73.8	75	76.2

Wash similar colours together, do not iron on print, wash and iron inside out.

