



WOMEN SWEAT DRESSES
STELLA STREETER

STDW143

The women's hoodie dress

Brushed Hoodie Dress

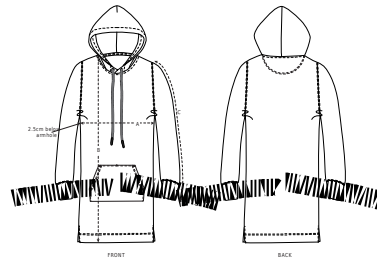
85% Organic ring-spun combed cotton, 15% Recycled polyester
 300 GSM

- Set-in sleeve
- Double layered hood in self fabric
- Round drawcords in matching body colour with metal tipping
- Metal eyelets
- Inside herringbone back neck tape
- Self fabric half moon at back neck
- Single needle topstitch at neckline and along hood opening
- 1x1 rib at sleeve hem
- Armhole, sleeve hem and bottom hem with twin needle topstitch
- Kangaroo pocket at front
- Slits at side seam

MEDIUM FIT

XS	S	M	L	XL
----	---	---	---	----

Size guide



SIZES		XS	S	M	L	XL
A	Half Chest	49	51.5	54.5	57.5	60.5
B	Body Length	83.5	85.5	87.5	89.5	90.5
C	Sleeve Length	59.5	60.5	61.5	62	62.5

Wash similar colours together, do not iron on print, wash and iron inside out.

